



jaga

Energy SAVERS LOW-H2O

INSTALLATION



TEMPO &
COCOON



BUILDING-IN



LINEA PLUS



STRADA



KNOCKONWOOD



MAXI



Verbindingsplaatjes bloot maken (aantal volgens lengtemaat).
Overige folie pas verwijderen bij montage van de bekleding !

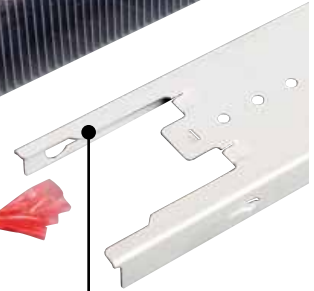
Dénuder les plaquettes de jonction (nombre selon longueur).
N'enlever le film plastique restant qu'avant le montage de l'habillage !

Verbindungsplatten freilegen (Anzahl je nach Länge).
Übrige Folie erst beim Einhängen der Verkleidung entfernen !

Uncover connecting plates (number in accordance with length).
Only remove the remaining film just before mounting the casing !

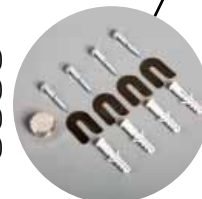


Warmtewisselaar
Échangeur de chaleur
Wärmetauscher
Heat exchanger

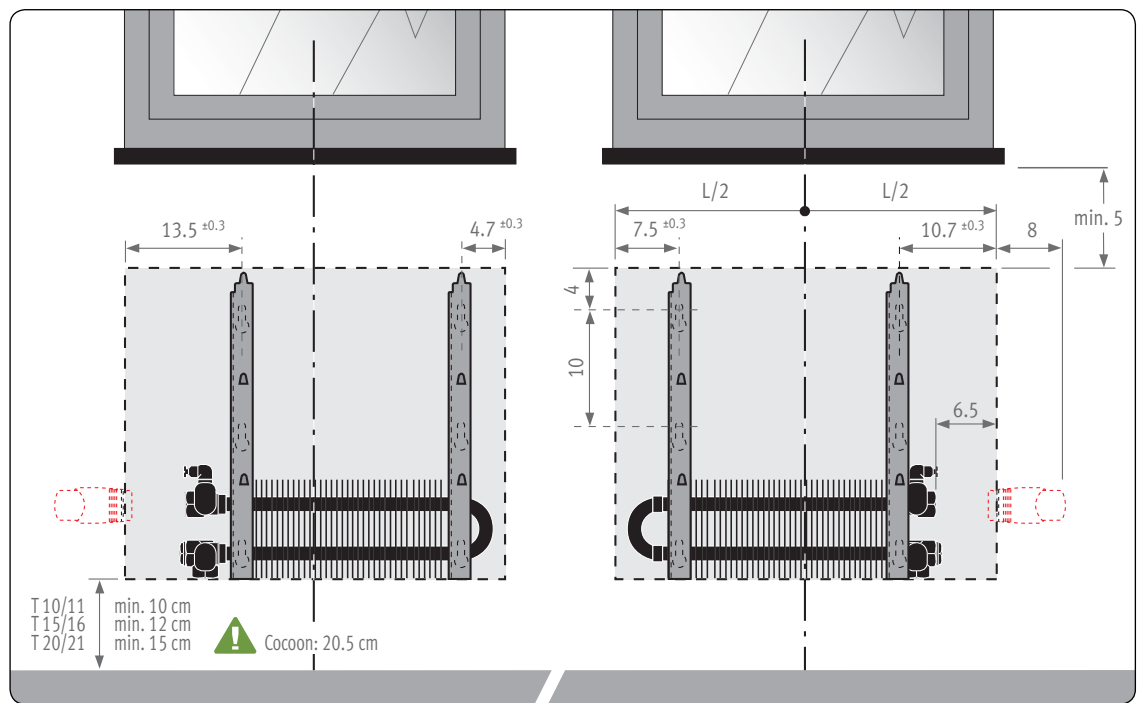
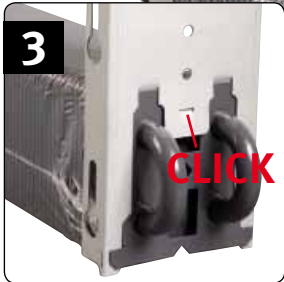


Consoles (volgens model)
Consoles (selon modèle)
Konsolen (je nach Modell)
Brackets (according to model)

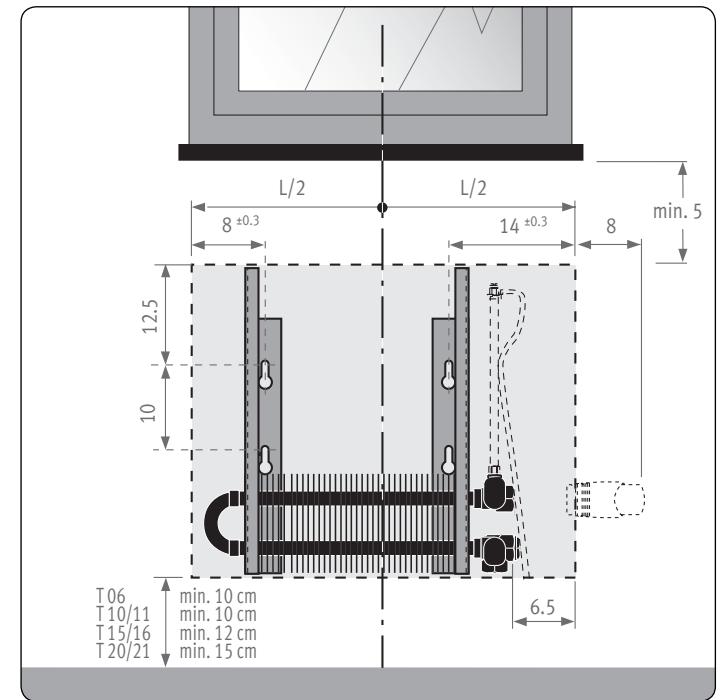
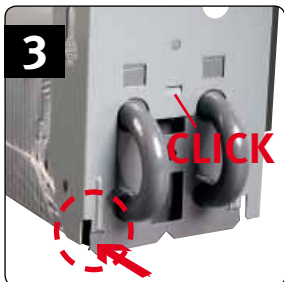
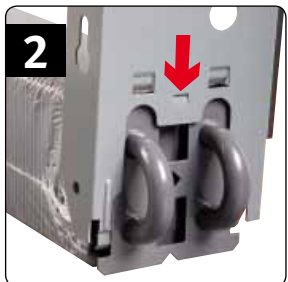
Bevestigingsset (volgens model)
Set de fixation (selon modèle)
Befestigungssatz (je nach Modell)
Fixing set (according to model)



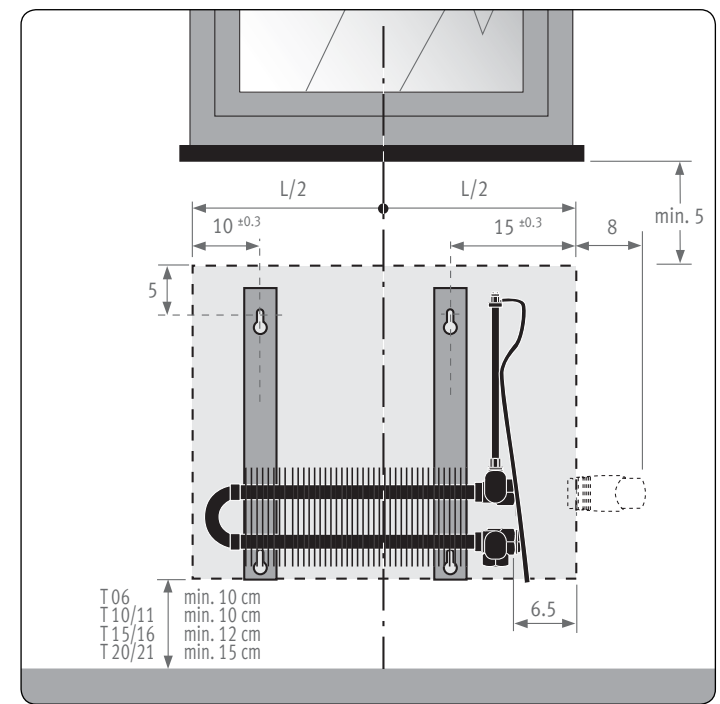
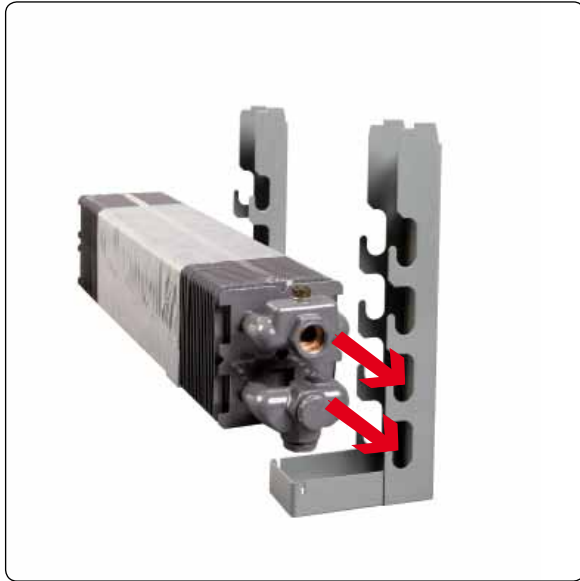
TEMPO & COCOON & BUILDING-IN



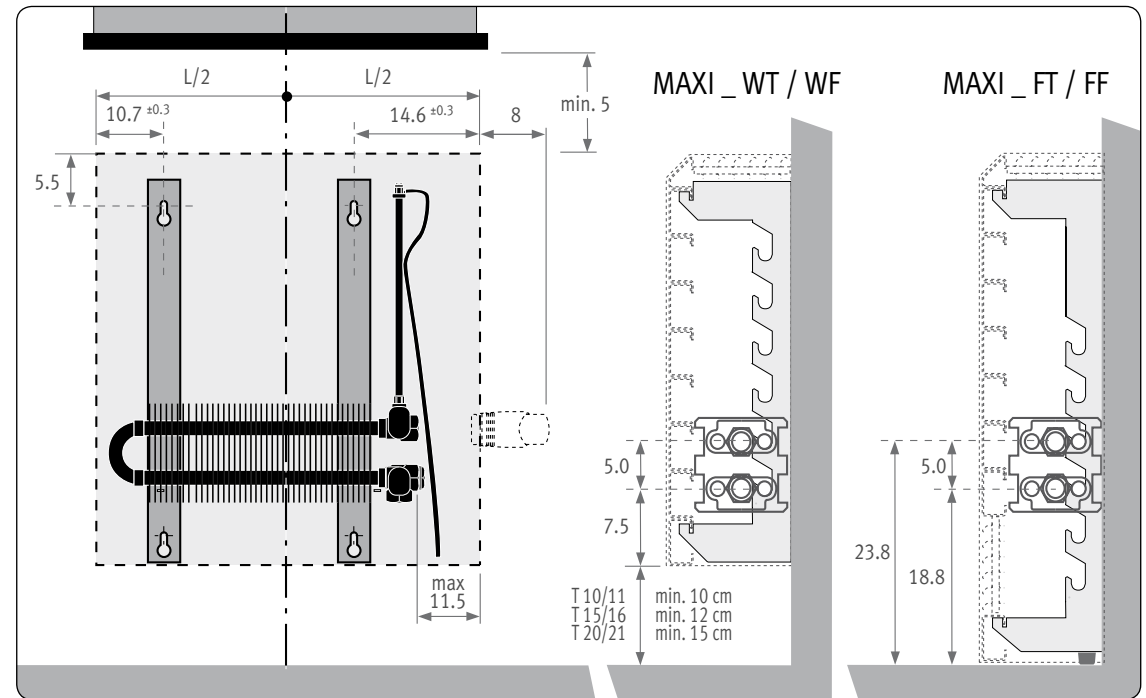
STRADA & LINEA PLUS & SENTINEL



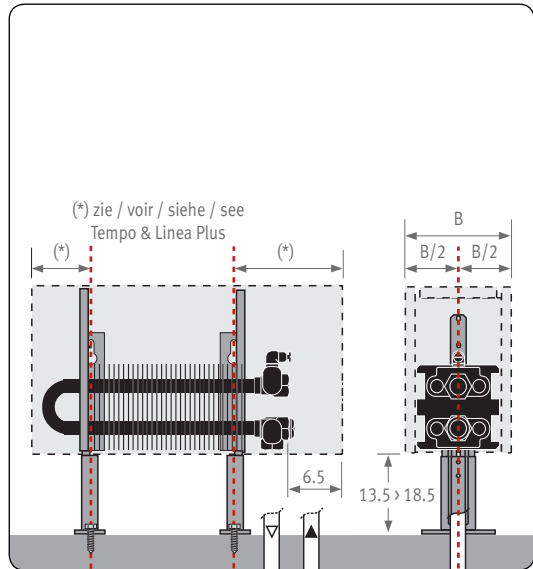
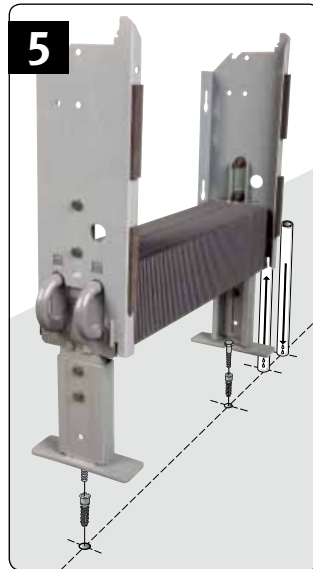
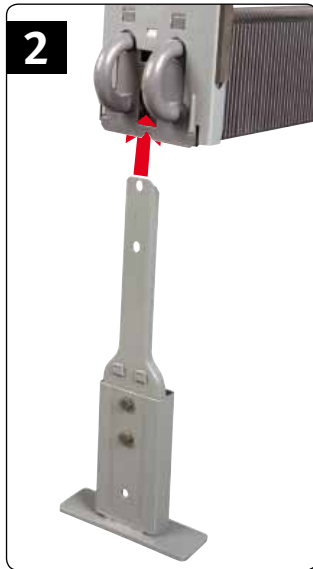
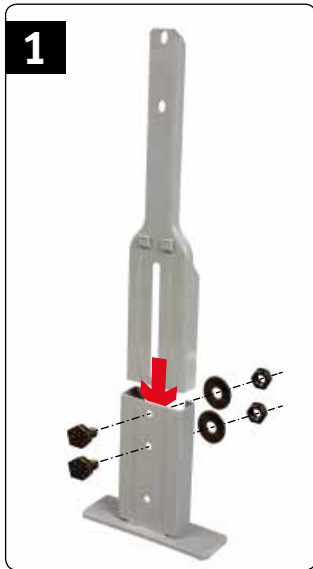
KNOCKONWOOD

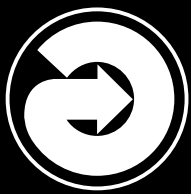


MAXI



TEMPO & LINEA PLUS vrijstaand _ sur pieds _ Standmodell _ freestanding





jaga

Energy SAVERS LOW-H₂O

CONNECTION



JAGA DANFOSS



JAGA



JAGA TYPE 6



JAGA PRO



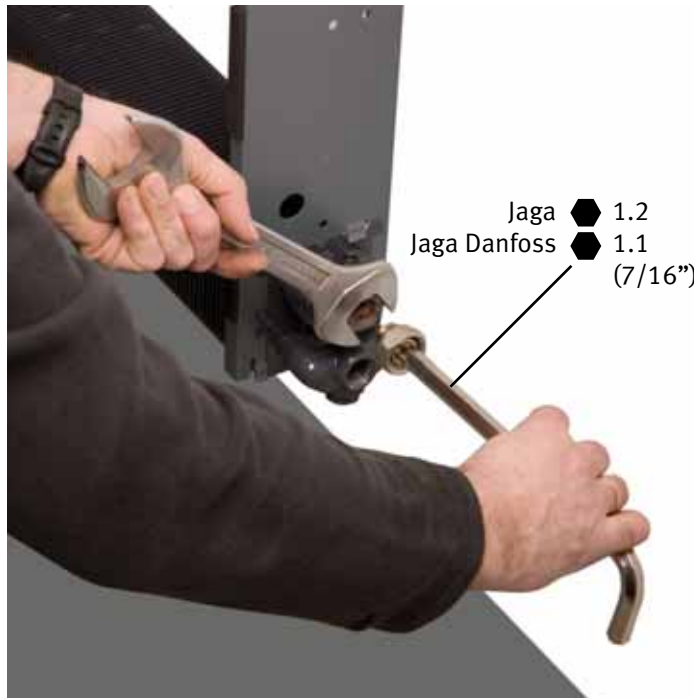
JAGA COMAP



JAGA TOP



- > Gebruik bij elke hydraulische verbinding teflon of vlas !
- > Toujours utiliser du teflon ou du chanvre à chaque raccordement hydraulique !
- > Bei jedem hydraulischen Anschluss Dichtband oder Hanf verwenden !
- > Always use PTFE tape or flax for all hydraulic connections !



THERMOSTAATKOPPEN VOOR JAGA VENTIELEN

TÊTES DE VANNE THERMOSTAT. POUR VANNES JAGA

THERMOSTATKÖPFE FÜR JAGA VENTILE

THERMOSTATIC HEADS FOR JAGA VALVES



COMPLETE AANSLUITSETS

Voor alle Low-H₂O radiatoren zijn complete aansluitsets beschikbaar. Inclusief klemkoppelingen en alle toebehoren, en met keuze uit verschillende bedienings- en thermostaatkoppen. Zie: www.theradiatorfactory.com

KITS DE RACCORDEMENT COMPLETS

Des kits de raccordement complets sont disponibles pour l'ensemble des radiateurs Low-H₂O Jaga. Y compris des raccords bicônes et l'ensemble des accessoires, avec un très large éventail de têtes de vanne manuelles et thermostatiques. Voir: www.theradiatorfactory.com

KOMPLETTE ANSCHLUßSÄTZE

Für alle Jaga Low-H₂O Heizkörper sind komplette Anschlußsätze erhältlich. Einschließlich Klemmringverschraubungen, allen Zubehörteilen und einer Auswahl verschiedener Betriebs- und Thermostatköpfe. Besuchen Sie: www.theradiatorfactory.com

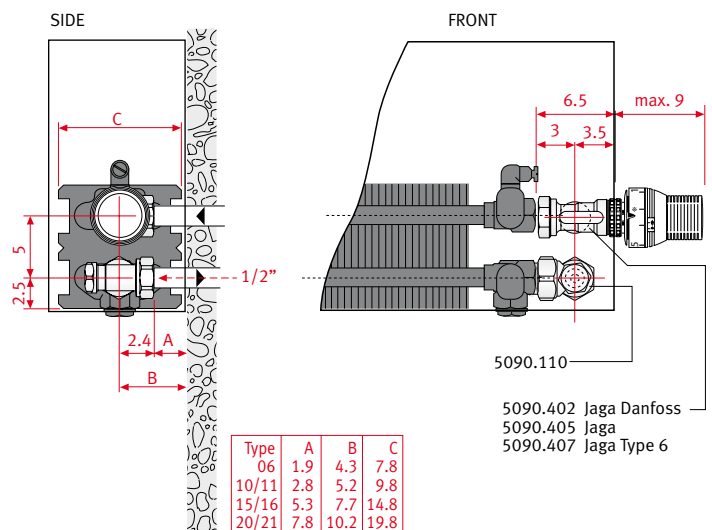
COMPLETE CONNECTION SETS

Complete Low-H₂O connection sets are available for all Jaga radiators. Including sleeve couplings and all accessories, and with a choice of various operating and thermostatic heads. Visit: www.theradiatorfactory.com

NAAR DE WAND _ VERS LE MUR _ ZUR WAND _ TO THE WALL

JAGA / JAGA TYPE 6 / JAGA DANFOSS

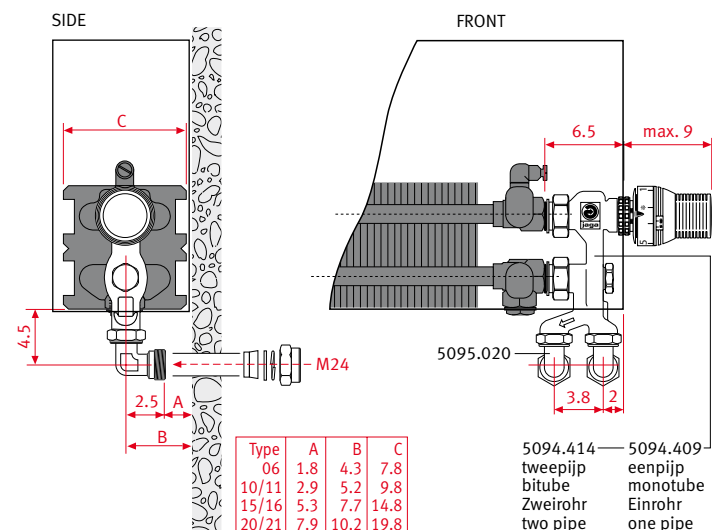
Tweepijp _ Bitube _ Zweirohr _ Two pipe



JAGA PRO

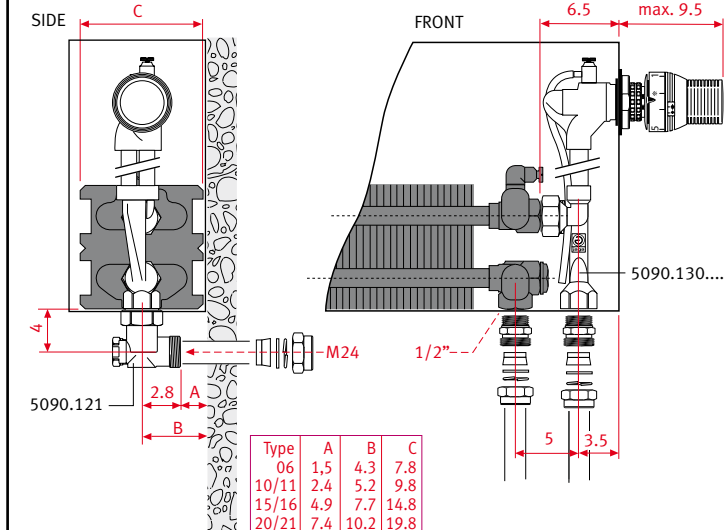
Niet voor Cocoon & Maxi _ Pas pour Cocoon & Maxi
Nicht für Cocoon & Maxi _ Not for Cocoon & Maxi

Een + tweepijp _ Mono + bitube _ Ein + Zweirohr _ One + two pipe



JAGA TOP

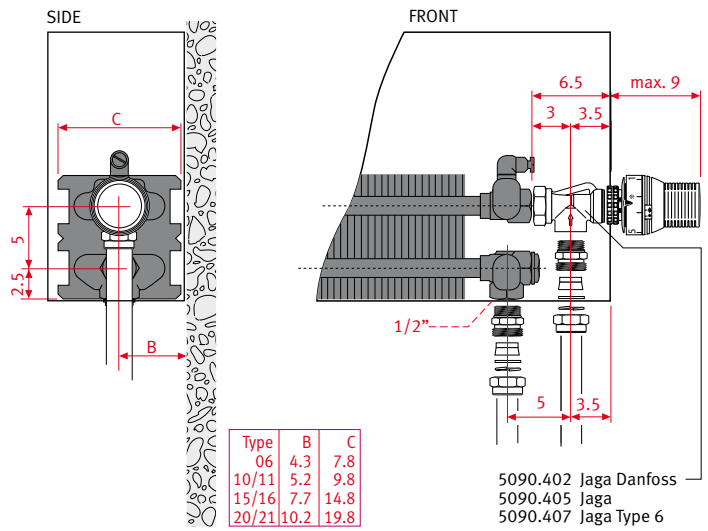
Tweepijp _ Bitube _ Zweirohr _ Two pipe



NAAR DE VLOER _ VERS LE SOL _ ZUM BODEN _ TO THE FLOOR

JAGA / JAGA DANFOSS

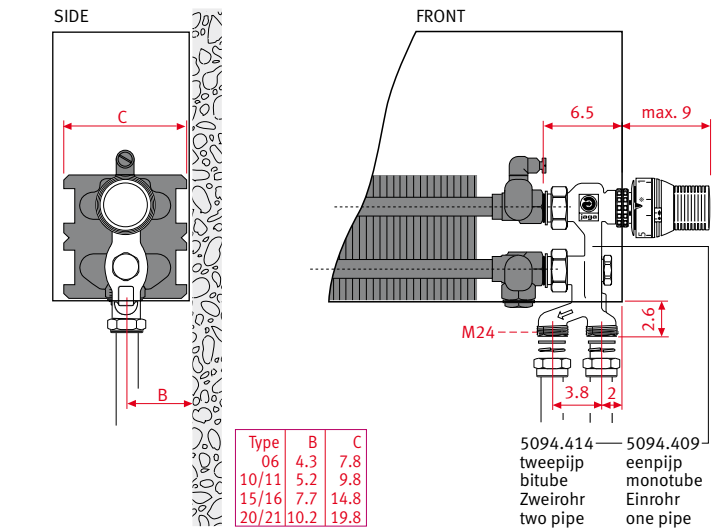
Tweepijp _ Bitube _ Zweirohr _ Two pipe



JAGA PRO

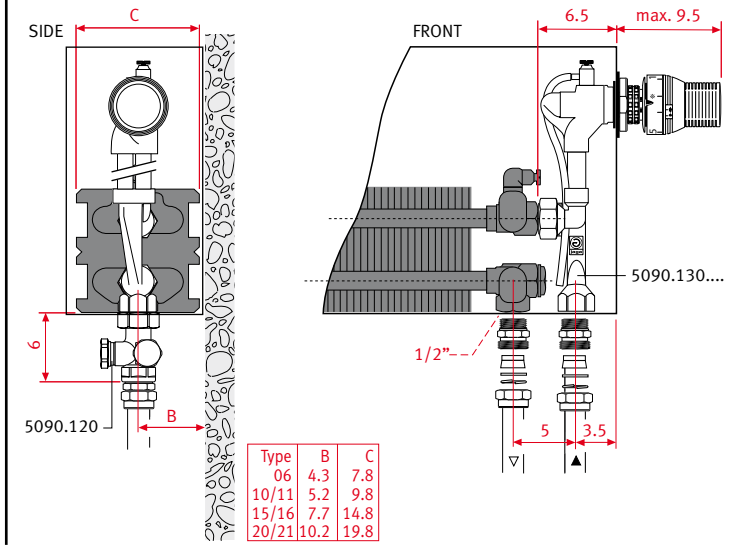
Niet voor Cocoon & Maxi _ Pas pour Cocoon & Maxi
Nicht für Cocoon & Maxi _ Not for Cocoon & Maxi

Een + tweepijp _ Mono + bitube _ Ein + Zweirohr _ One + two pipe



JAGA TOP

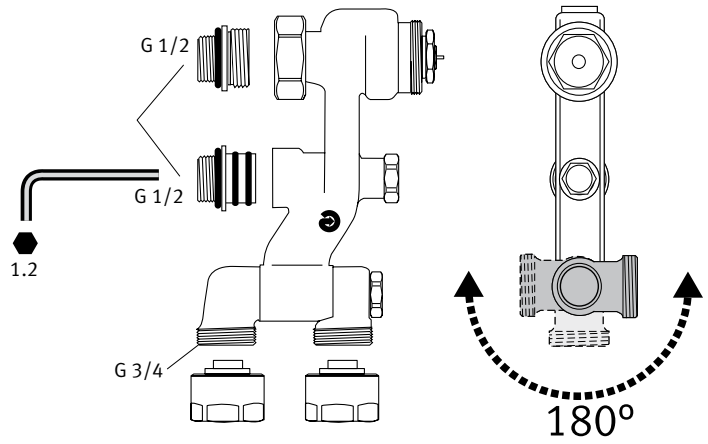
Tweepijp _ Bitube _ Zweirohr _ Two pipe



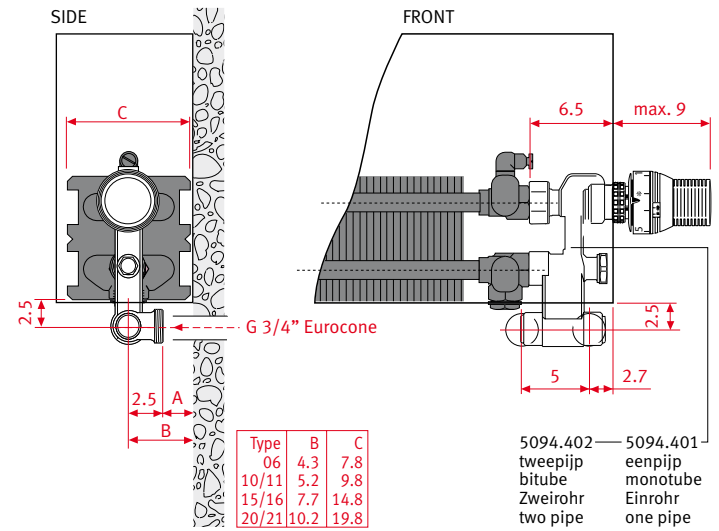
NAAR DE WAND+VLOER _ VERS LE MUR+SOL _ ZUR WAND+BODEN _ TO THE WALL+FLOOR

JAGA COMAP

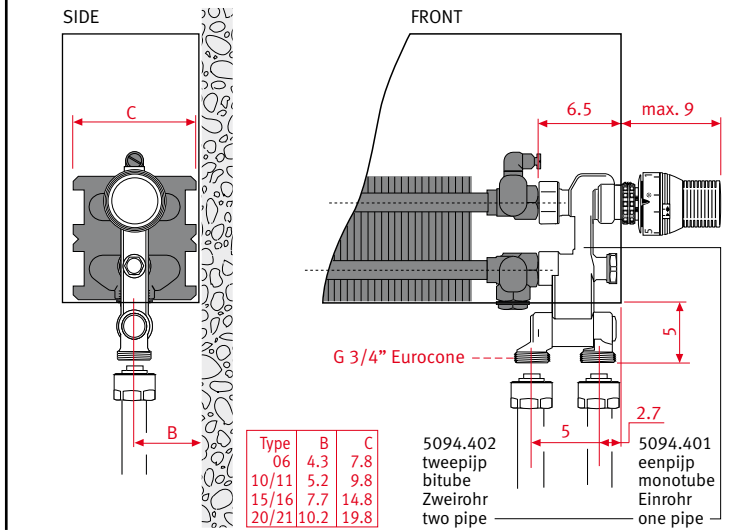
Een + tweepijp _ Mono + bitube
Ein + Zweirohr _ One + two pipe



Naar de wand _ Vers le mur _ Zur Wand _ To the wall



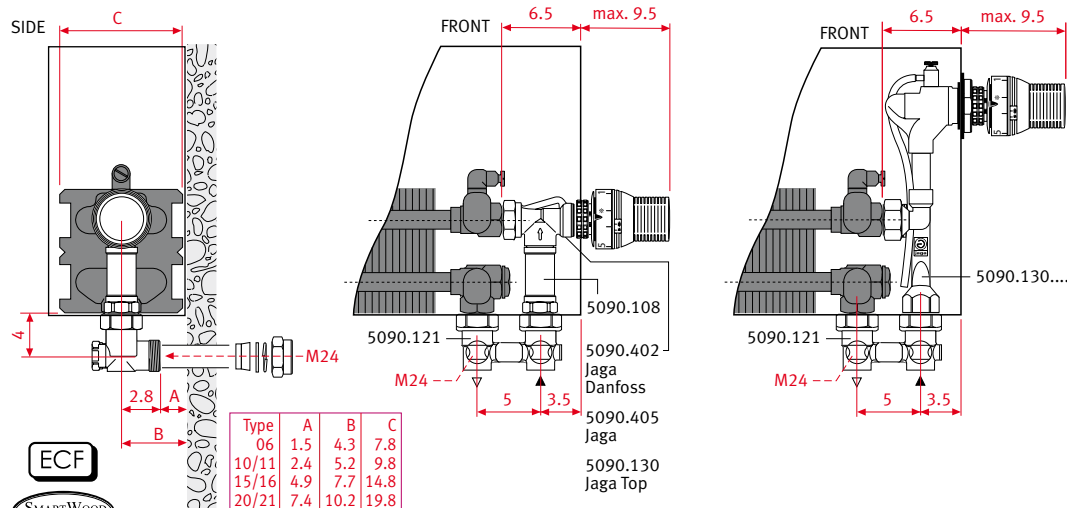
Naar de vloer _ Vers le sol _ Zum Boden _ To the floor



EENPIJP _ MONOTUBE _ EINROHR _ ONE PIPE

JAGA _ JAGA TOP _ JAGA DANFOSS

Naar de wand _ Vers le mur _ Zur Wand _ To the wall



- › H-stuk met 2 geïntegreerde afsluiters en afsluitbare by-pass (eenpijp/tweepiip), regelbaar van 25% tot 100%.
- › Raccord en H avec 2 raccords réglables intégrés et by-pass avec fermeture (monotube/bitube), réglable de 25% à 100%.
- › H-Stück mit 2 integrierten Ventilen und abschließbarem Bypass (Einrohr/Zweirohr), regelbar von 25% bis 100%.
- › H-piece with 2 integrated lockshields and lockable by-pass (one pipe/two pipe), adjustable from 25% to 100%.

Naar de vloer _ Vers le sol _ Zum Boden _ To the floor

