



**jaga**



*TOP  
PERFORMERS*

**QUATRO CANAL**

2018.EX



# EPECON

## QUATRO CANAL

Super-powered climate control for 4-pipe systems

### **Heating, cooling, ventilation.**

Despite its compact dimensions, the Quatro Canal is a powerful main heating system, cooling unit and ventilation system, all in one. Quatro Canal provides the highest possible climate comfort quietly powerfully, and unobtrusively.

### **Compact and silent**

The high-tech dynamic 4-pipe heat exchanger and the thermal activator provide an effortless transition from heating to cooling or vice versa. They have been designed to deliver a very high heat output and are perfect to provide effective cooling with dry as well as wet cooling systems.

Using the latest EC motors enables Quatro Canals to consume up to 50% less electrical energy than traditional motors, and enables remote control using the latest home automation and building management systems.

Suitable for non-condensing and condensing cooling with chilled water

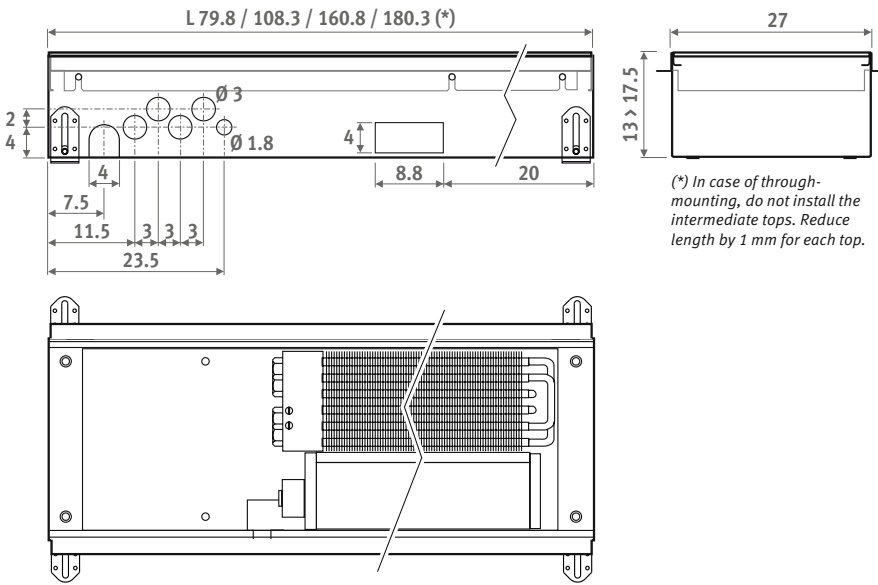




# QUATRO CANAL - SUMMARY



## DIMENSIONS (in cm)



(\*) In case of through-mounting, do not install the intermediate tops. Reduce length by 1 mm for each top.

## ORDERING CODE

code	height	length	width	grille
QUAF . 013	080	27	/XXX	
enter grille code ↓				

## STANDARD DELIVERY

- casing in Sendzimir-galvanised steel sheet (RAL7024) with height adjustment and stainless steel grille support
- anodized aluminium grille(s)
- dynamic heat exchanger with separate circuits and stainless steel flexible connections 1/2", length 15
- tangential EC thermic activator(s)

With energy efficient EC motor

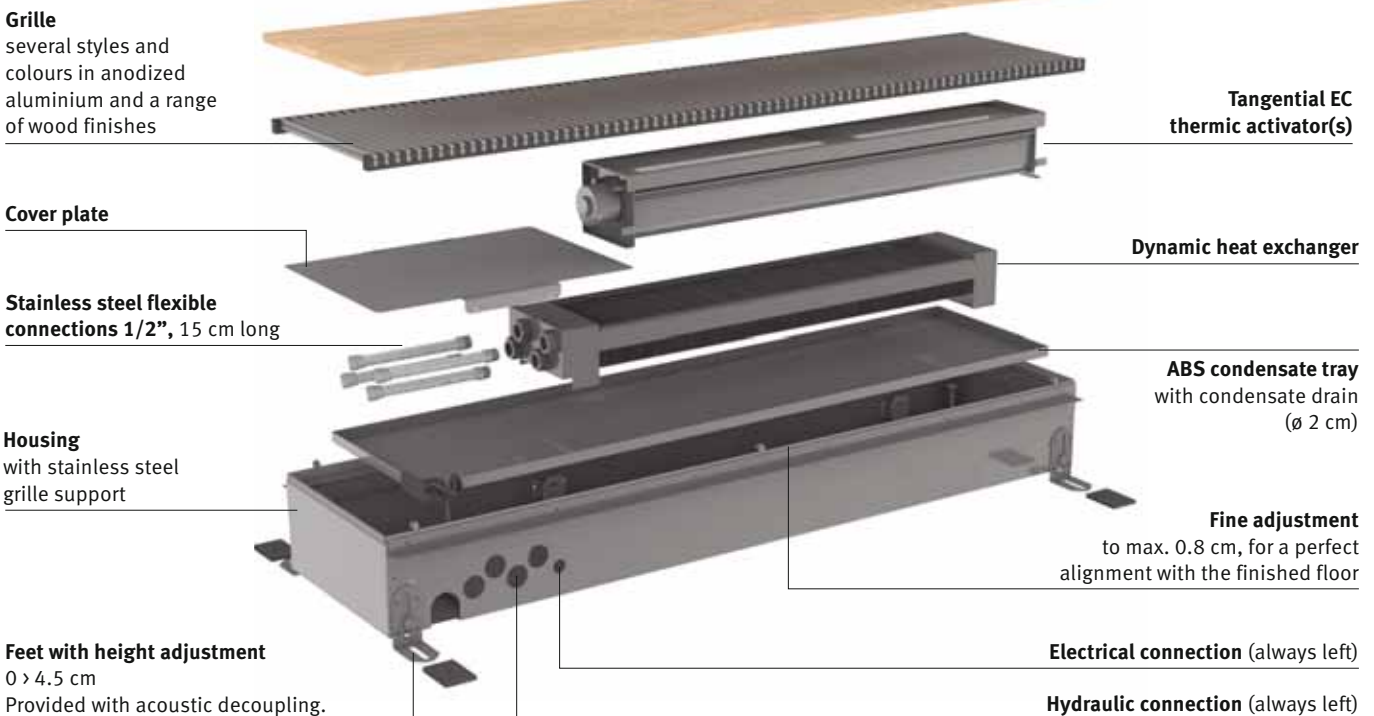
## HYDRAULIC CONNECTION

- the 4-pipe heat exchanger with one-sided connection on the left always has to be connected to an installation with two separated hydraulic systems
- always install Micro Canal with the heat exchanger on the window or wall side
- 2 x 1/2" stainless steel hose included
- allow extra space for curtains, in between the window and the canal.
- The heat exchanger must always be kept accessible for maintenance purposes
- if the appliance is not mounted flat on the floor, the space between the bottom of the appliance and the floor should be filled with a stable filler material.

## ELECTRICAL CONNECTION

- clamp connector for 24 VDC electrical connection, left side, to be connected via external power supply.
- speedcontrol activator(s) 0-10 V

## COMPOSITION



# QUATRO CANAL

QUAF.013.080.27/BNA



HEATING									COOLING								
Watts 75/65/20°C			Watts 55/45/20°C			Watts 35/30/20°C			Watts total 7/12°C - 27°C D.B. 50% R.H.			Watts sensible 7/12°C - 27°C D.B. 50% R.H.					
max.	med.	min.	max.	med.	min.	max.	med.	min.	max.	med.	min.	max.	med.	min.			
H	L	B															
013	80	27	1126	962	590	676	577	354	282	241	148	544	432	230	370	290	150
	110		1936	1654	1015	1162	993	609	484	414	254	935	742	396	636	498	258
	160		3394	2900	1779	2037	1740	1067	849	725	445	1639	1301	694	1116	874	453
	180		4255	3635	2229	2553	2181	1338	1064	909	557	2055	1631	870	1398	1095	567

Tested at HLK Stuttgart according to new standard EN 16430:2015

## TECHNICAL DATA

			FAN	SOUND PRESSURE**			RATED INPUT			AIR FLOW	WATER FLOW	
			Number	dB(A)			Watts			m³/h	l/h	l/h
				max.*	med.*	min.*	max.*	med.*	min.*	max.*	heating max.*	cooling max.*
H	L	B										
013	80	27	1	38	35	19	8.5	5.2	1.9	90	97	94
	110		1	39	36	24	14.0	8.2	2.3	170	167	161
	160		2	41	38	25	22.0	14.1	4.3	260	293	283
	180		2	42	39	26	28.0	18.0	4.9	340	367	354

\*\* Noise measurement according to ISO 3741:2010 with an assumed room attenuation of 8 dB(A) / room volume 75 m³ / reverberation time 0.5 sec.

\* max. 10 VDC / med. 8 VDC / min. 4 VDC

Correction factors & pressure drop: see "Technical info" chapter

## OVERVIEW GRILLES

### Wooden grilles



BON Oak

BOV Oak varnished

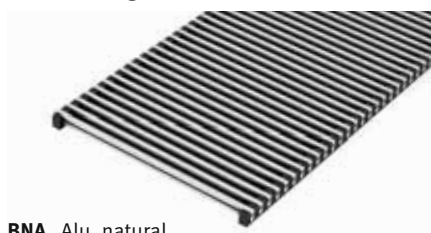


BBN Beech

BBV Beech varnished



### Aluminium grilles



BNA Alu. natural



BNC/XXX Alu. lacquered

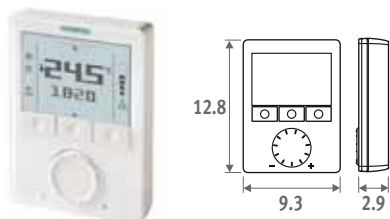


To ensure perfect adherence of the lacquer coating, an extremely wear-resistant and UV-resistant polyester lacquer coating of the highest quality is used.

Only in glossy (code 2..) and special colours 006, 005, 026, 028.

# QUATRO CANAL - OPTIONS

## Siemens clock thermostat for wall mounting



- unlimited adjustment possibilities:

74 features and diagnostic test

For more information contact Jaga

☎ +32 11 29 41 12 - ✉ export@jaga.be

or your local dealer.

### CODE

8751.050009 wall mounted

## PRE-ASSEMBLED JAGA DYNAMIC PRODUCT CONTROLLER (JDPC)

Multifunctional controller for dynamic heating and cooling devices provided with one or more built-in fans. The Jaga Dynamic Product Controller is pre-configured and assembled inside the device. The configuration options are device dependent, and are selected using the code shown on the sticker in the device.

- control per appliance
- control with operation and with sensor for water temperature, pre-configured and assembled by Jaga
- power supply 24 VDC
- ventilator settings:
  - o standby
  - o heating: 3 speeds (operates at water temperature >28°C, can easily be modified)
  - o cooling: 3 speeds (operates at water temperature <18°C, can easily be modified)
- 0-10 V input for building management system/thermostats/DPC.QU72

For more information contact Jaga

☎ +32 11 29 41 12 - ✉ export@jaga.be

or your local dealer.

### CODE

DPC.QU25 Heating and cooling



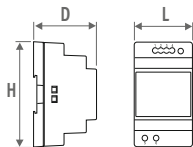
Touch operation

Product controller

## POWER SUPPLY DIN-RAIL MONTAGE



The guarantee is only valid if the original Jaga power supply is used.



CODE	H	L	D
7990.054	9.0	3.5	5.9
7990.055	9.0	5.3	5.9
7990.056	9.0	7.0	5.9
7990.053	12.5	12.6	8.3

- for DIN-rail or wall mounting
- conformity UL60950 / UL508 / IEC 60950-1 / TUV EN61558-2-16 / Class 2
- output voltage 24 VDC / input 100 - 240 VAC
- screw connection and LED indicator

CODE	Output Watts	Output current A
7990.054	36	1.5
7990.055	60	2.5
7990.056	100	3.9
7990.053	240	10

Required power = sum of the power consumption of the devices

## MAXIMUM CABLE LENGTH

in function of the number of devices:

see <http://theradiatorfactory.com/en/downloads>

## SEPARATE POWER SUPPLY

Waterproof power supply 24 VDC/30 Watt with waterproof cable gland.



Not suitable for installation in the floor duct.

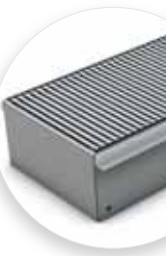
- conformity: UL60950 - EN 60950 / Class 2
- output voltage 24 VDC
- input voltage 100 - 240 VAC
- dimensions L 14.5 x B 4.5 x H 3.0 cm

CODE	output Watts	Output current A
37603.010002	30	1.25

## RECOMMENDED COMBINATIONS

	Heating and/or cooling	
	Including thermostat for readjustment	Excluding thermostat
<b>Product</b>	Quatro Canal	Quatro Canal
<b>Regulation</b>	Thermostat heating / cooling Ordering code 8751.050009	Pre-mounted JDPC with control panel DPC.QU25 for heating and cooling
<b>Power supply</b>	Power supply: ordering code 37603.010002	Power supply: ordering code 37603.010002
<b>Connection set</b>	Connection set 97 with 24 VDC 0-10V motor CODY.JA4.10.2... <i>fill in sleeve coupling code: see p. 325)</i>	Connection set 99 with 2 lockshields CODY.LOM.00.2... <i>fill in sleeve coupling code: see p. 325)</i>

# OPTIONS - QUATRO CANAL



## CORNER PIECE



- aluminium grille natural or lacquered
- housing with stainless steel grille support
- height adjustment
- fine adjustment for alignment with the finished floor

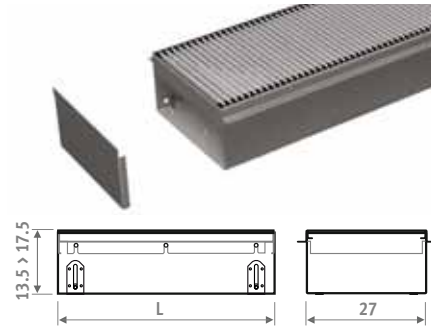
### CODE

QUAD.013 039 27/BNA Alu. natural  
 QUAD.013 039 27/BNC/ ... Alu. lacquered

*enter colour code*

## EMPTY HOUSING

To fill open spaces for a continuous installation.



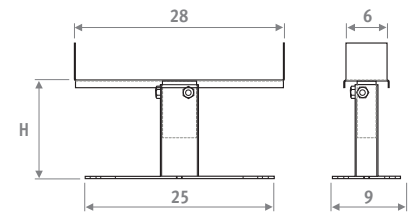
- aluminium or wooden grille
- casing with stainless steel grille support
- height adjustment and fine adjustment for alignment with the finished floor
- cover plate

**ORDERING CODE**

	code	height	length	width	grille
QUAD.	013	080	27	BNA	

L 080  
 110  
 160  
 180

## FEET WITH HEIGHT ADJUSTMENT FOR RAISED FLOORS



- lacquered in dark grey RAL 7024.
- easy installation by means of screws
- 1 set includes 2 height adjusting controls

### Number of sets per Quatro Canal

L 80 = 1 set  
 L 110 = 1 set  
 L 160 = 2 sets  
 L 180 = 2 sets

CODE	H
5208.05070000	5 > 7 cm
5208.08130000	8 > 13 cm
5208.13230000	13 > 23 cm
5208.20300000	20 > 30 cm

# QUATRO CANAL



Weight and water content without packaging or options

## WEIGHT IN KG

### QUATRO CANAL

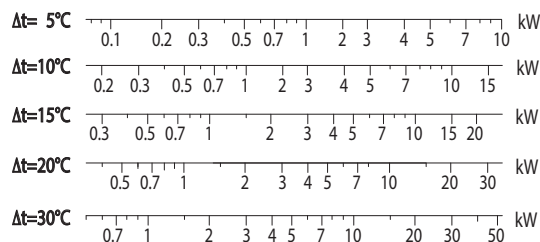
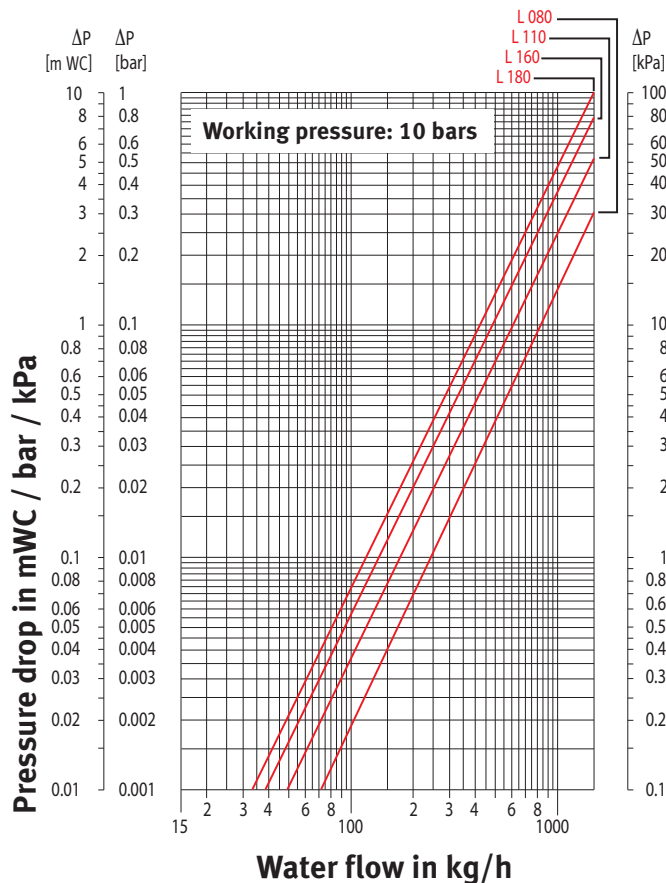
L	Weight (kg)
080	12.8
110	17.6
160	25.6
180	28.8

## WATER CONTENT IN LITRE

### QUATRO CANAL

L	heating	Cooling
080	0.092	0.183
110	0.157	0.315
160	0.276	0.552
180	0.346	0.692

# PRESSURE DROP



The information in this price list is correct at the time of printing. Jaga reserves the right to change product specification at any time in line with our policy of continuous improvement and innovation. All prices in Euro, exclude VAT. Prices valid from 1st March 2018. Replaces all existing price lists.



# CORRECTION FACTORS

## AVERAGE CORRECTION FACTORS ACCORDING TO EN442 - 75/65/20°C

Tv	Tl	Tr	25	30	35	40	45	50	55	60	65	70	75	80	85
90	18		0.56	0.67	0.76	0.84	0.92	0.99	1.05	1.11	1.17	1.24	1.29	1.34	1.39
	20		0.49	0.62	0.71	0.80	0.87	0.94	1.01	1.07	1.13	1.20	1.25	1.30	1.35
	22		0.42	0.56	0.66	0.75	0.83	0.90	0.97	1.03	1.09	1.16	1.21	1.26	1.31
	24		0.31	0.50	0.61	0.71	0.79	0.86	0.93	0.99	1.05	1.11	1.17	1.22	1.27
85	18		0.53	0.64	0.73	0.81	0.88	0.95	1.01	1.07	1.14	1.19	1.24	1.29	
	20		0.47	0.59	0.68	0.76	0.84	0.91	0.97	1.03	1.09	1.15	1.20	1.25	
	22		0.39	0.53	0.63	0.72	0.79	0.86	0.93	0.99	1.05	1.11	1.16	1.21	
80	24		0.29	0.47	0.58	0.67	0.75	0.82	0.89	0.95	1.01	1.07	1.12	1.17	
	18		0.50	0.61	0.70	0.77	0.84	0.91	0.97	1.03	1.09	1.14	1.19		
	20		0.44	0.56	0.65	0.73	0.80	0.87	0.93	0.99	1.05	1.10	1.15		
75	22		0.37	0.50	0.60	0.68	0.76	0.82	0.89	0.95	1.01	1.06	1.11		
	24		0.27	0.45	0.55	0.64	0.71	0.78	0.85	0.91	0.97	1.02	1.07		
	18		0.48	0.58	0.66	0.74	0.80	0.87	0.93	0.99	1.04	1.09			
	20		0.42	0.53	0.62	0.69	0.76	0.82	0.88	0.95	1.00	1.05			
70	22		0.35	0.48	0.57	0.65	0.72	0.78	0.84	0.91	0.96	1.01			
	24		0.25	0.42	0.52	0.60	0.68	0.74	0.80	0.87	0.92	0.97			
	18		0.45	0.55	0.63	0.70	0.76	0.82	0.89	0.94	0.99				
	20		0.39	0.50	0.58	0.65	0.72	0.78	0.85	0.90	0.95				
65	22		0.32	0.45	0.54	0.61	0.68	0.74	0.80	0.86	0.91				
	24		0.24	0.39	0.49	0.57	0.64	0.70	0.76	0.82	0.87				
	18		0.42	0.51	0.59	0.66	0.72	0.78	0.84	0.89					
	20		0.36	0.47	0.55	0.62	0.68	0.74	0.80	0.85					
60	22		0.30	0.42	0.50	0.57	0.64	0.70	0.76	0.81					
	24		0.22	0.36	0.46	0.53	0.60	0.66	0.72	0.77					
	18		0.39	0.48	0.55	0.62	0.68	0.74	0.79						
	20		0.34	0.43	0.51	0.58	0.64	0.70	0.75						
55	22		0.28	0.39	0.47	0.54	0.60	0.66	0.71						
	24		0.20	0.33	0.42	0.49	0.56	0.62	0.67						
	18		0.36	0.44	0.51	0.58	0.64	0.69							
	20		0.31	0.40	0.47	0.54	0.60	0.65							
50	22		0.25	0.35	0.43	0.49	0.55	0.61							
	24		0.17	0.30	0.39	0.45	0.51	0.57							
	18		0.33	0.41	0.47	0.53	0.59								
	20		0.28	0.36	0.43	0.49	0.55								
45	22		0.22	0.32	0.39	0.45	0.51								
	24		0.15	0.27	0.35	0.41	0.47								
	18		0.30	0.37	0.43	0.49									
	20		0.25	0.33	0.39	0.45									
40	22		0.20	0.28	0.35	0.41									
	24		0.13	0.24	0.31	0.37									
	18		0.26	0.33	0.39										
	20		0.22	0.29	0.35										
35	22		0.17	0.25	0.31										
	24		0.11	0.20	0.27										
	18		0.23	0.29											
	20		0.18	0.25											
30	22		0.14	0.21											
	24		0.08	0.16											
	18		0.19												
	20		0.14												
	22		0.10												
	24		0.06												

The indicated outputs with  $\Delta T$  50 and  $\Delta T$  60 are the exact outputs.  $\Delta T$  50 output measured in accordance with EN 442 and  $\Delta T$  60 output calculated according to EN 442. An average correction factor is given in this table for all other  $\Delta T$  outputs, applicable for all dimensions.